



"I am always hungry for bananas / That it almost seems to be a sin / They're so good that when I'm all through eating / I still love to nibble on the skin."

The Sweet Violet Boys sang these words in "I Love My Fruit" ...

In the 1920s-1930s, a few country and hillbilly songs featured suggestive lyrics and double entendres.



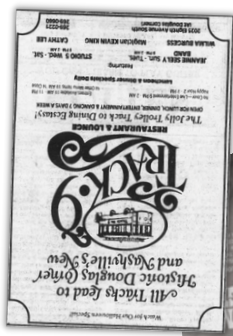
Suggestive Lyrics



Nashville Queer History's Mini-Zines, No. 3

QUEER COUNTRY MUSIC

Wilma Burgess never came out to fans, but her sexuality was apparently known among the country music industry and friends and family. Her popularity peaked in the 1960s. In the 1980s, she opened Track 9 music venue across from Nashville's first lesbian bar, The Women's Room.



This zine was brought to you by

Nashville Queer History

www.nashvillequeerhistory.org

@NashvilleQueerHistory



First published in October 2023



The album was rediscovered at the turn of the century, and it was reissued a few times with the band playing reunion shows. In 2019, the band released their first full-length album since 1973, called *Blackberry Rose and Other Songs and Sorrows*.



Lavender Country formed in Seattle, and released their self-titled debut album in 1973. It was the first openly gay country music album, and the band was known for their political activism.

Today, country music is gayer than ever before.

Today's artists still face the challenge of being accepted by their peers and fans. The queer history of country music is often erased or not discussed by industry leaders, which is why we continue to forge our own paths and create our own queer country music shows.

Brooke Eden



Orville Peck



Dunn was among the most popular female country musicians of the late '80s and early '90s, charting over 20 hit singles. She kept her sexuality private and many did not find out until her death in 2016.

Holly Dunn



The *Deadly Nightshade*, a country rock band from New England, often played all-women's music festivals and LGBTQ events in the 1970s, but their management required them to remain closeted. Many of their songs were outright feminist, and the record label asked why they couldn't do more "regular" songs.



k.d. lang

Despite winning the Grammy Award for Best Female Country Vocal Performance in 1989 and 1993, she often reflects on how Nashville and country music did not fully embrace her before and after she came out as lesbian in 1992.



"What I admire about her the most is that she dares to be herself in a world that constantly tries to tell you who you are."

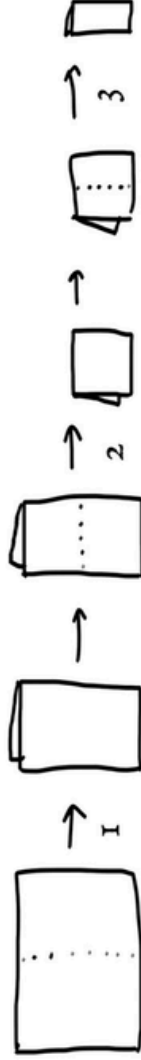
-Wynonna Judd

DIY Animation Club

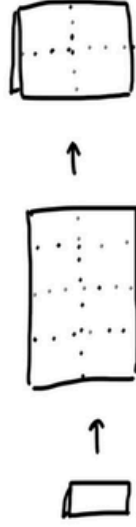
Make a One-Page Zine



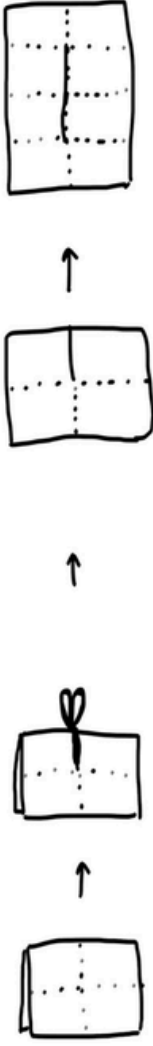
TAKE ONE SHEET OF PAPER AND FOLD IT IN HALF THREE TIMES...



UNFOLD IT ALL THE WAY, THEN RE-FOLD IT IN HALF LENGTH-WISE.



STARTING FROM THE FOLDED EDGE, CUT HALFWAY THROUGH THE PAPER.



UNFOLD THE PAGE TO REVEAL A CUT IN THE CENTER, THE WIDTH OF TWO FOLDED SEGMENTS.

FOLD THE PAGE IN HALF ALONG THE CUT. THEN, FOLD ALL THE PAGES OVER PRESS THE ENDS OF THE FOLDED PAGE INWARD IN THE SAME DIRECTION, TOWARD THE CENTER SO THE CUT SPLITS & OPENS. TO CREATE THE SPINE.

